

# Empower Tax File Integration for Sage HRMS

We don't publish Sage HRMS...

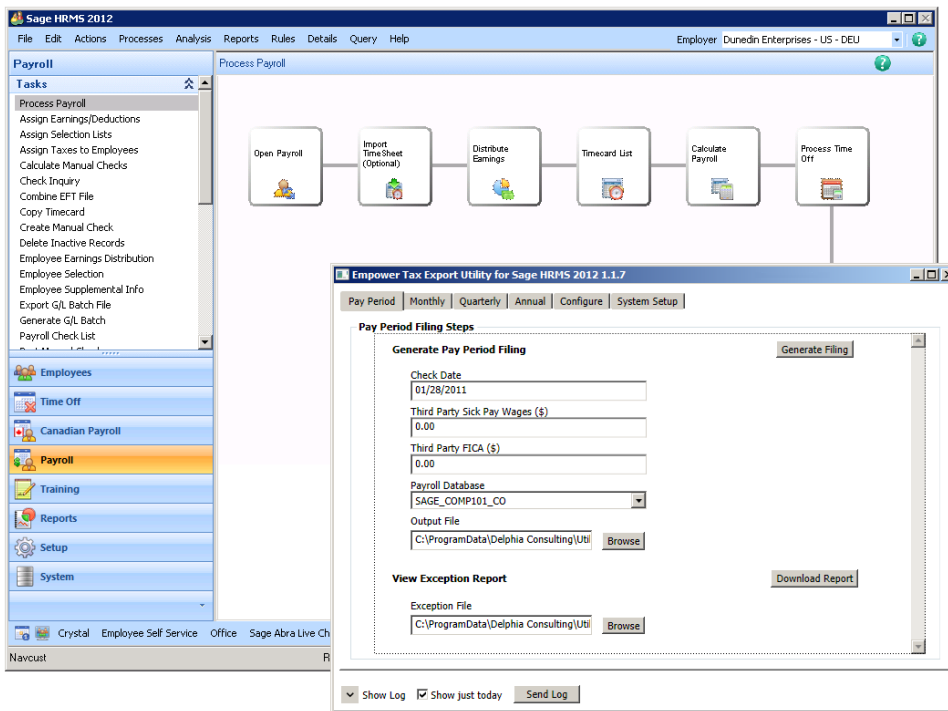
we help you use it more effectively.

Outsourcing payroll processing is costly! Empower Tax Filing provides peace of mind by reliably handling your federal, state and local tax filing and year end processing while enjoying the benefits of processing your payroll with Sage HRMS.

Empower Tax File Integration for Sage HRMS enables the Empower Tax Filing service for users of Sage HRMS payroll an easy to use interface. After completing a payroll in Sage HRMS, simply run one of four reports that collect the necessary summary and wage data needed for tax filing and payment:

- Pay Period—run after each payroll
- Monthly—run after the last payroll of each month
- Quarterly—run after the last payroll of each quarter
- Annual—run after the final payroll for the year

It's that simple! Empower takes care of the rest.



## About Empower

Empower Tax Filing offers complete outsourcing solutions for Payroll Tax Reporting and Filing and is perfect for those employers who wish to outsource the complicated process—and the associated risks—of employer compliance while processing payroll in-house.

Most outsourcers impound your funds days—or even weeks—before the agency payment is due. This allows them to benefit from the float, but it takes control of your cash away from you. With standard outsourcers, you're probably losing more money than you think.

© Delphia Consulting, LLC. 2011 All rights reserved. Sage and the Sage product and service names mentioned herein are registered trademarks or trademarks of Sage, Inc. All other trademarks are the property of their respective owners.

Delphia Consulting, LLC  
250 East Broad Street, Suite 1150  
Columbus, OH 43215  
Phone: 888-421-2004  
[www.DelphiaConsulting.com](http://www.DelphiaConsulting.com)

## Peace of Mind

Outsourcing the risk of tax compliance with Empower enables the best of both worlds – outsourced tax filing with the benefits if in-house payroll.

## Supported Integration

As an Endorsed Developer for Sage HRMS, Delphia Consulting works closely with both Sage and Empower to assure any changes in either system are updated in the integration in a timely manner.

## Benefits of Empower Tax Filing

- ✓ Manages when taxes are due
- ✓ Prepares, signs and files all payroll tax returns
- ✓ Responds to agency correspondence on your behalf
- ✓ Provides detailed reports
- ✓ Provides copies of all returns
- ✓ 24/7 access to your data and returns
- ✓ Utilizes standard APIs
- ✓ Launched from within the Process Payroll diagram
- ✓ Automatically adds missing earning or deduction codes on the fly

## For more information contact:

Your Sage HRMS Business Partner

Or, contact us directly:

Kim Kocher

614-754-4346

[kkocher@delphiaconsulting.com](mailto:kkocher@delphiaconsulting.com)

**Microsoft**  
**GOLD CERTIFIED**

Partner

sage

Development Partner

✓ ENDORSED



DELPHIA CONSULTING